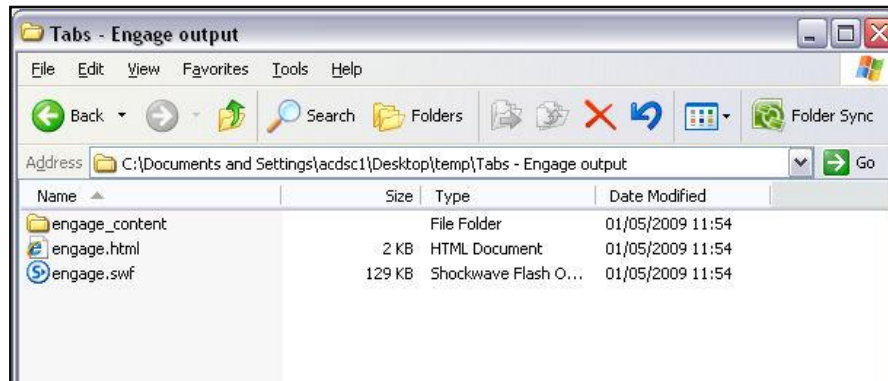
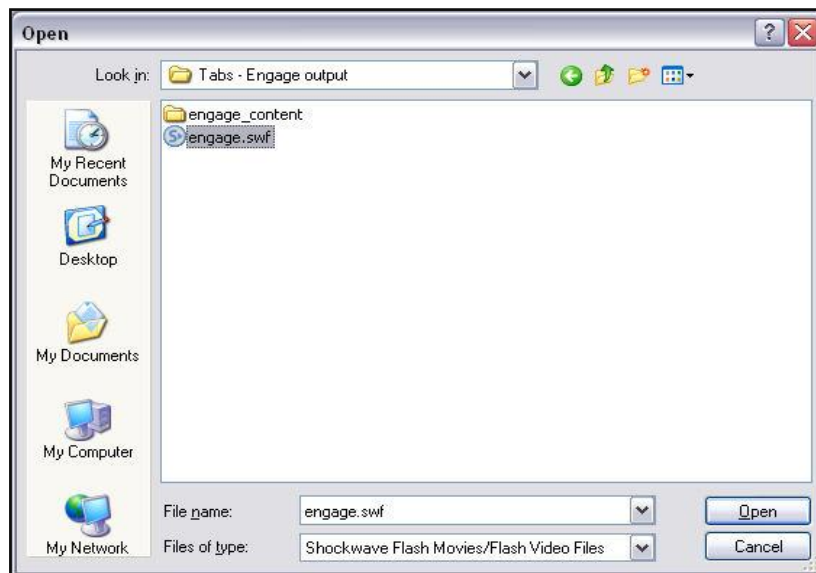


This will outline another way to insert Engage interactions into your Articulate presentations, which will allow you to resize the interaction to maintain hotspot functionalities elsewhere on your slides.



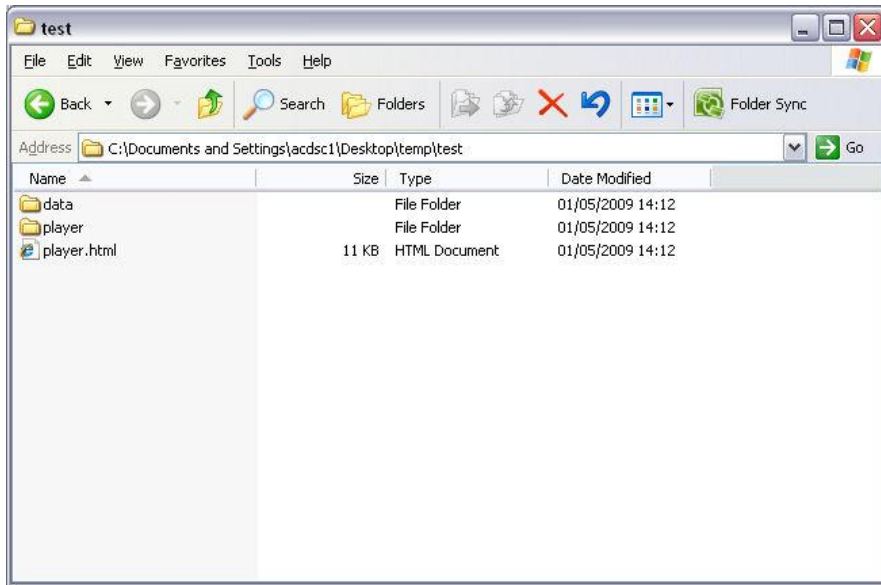
Create and publish your Engage interaction. Here are the output files.



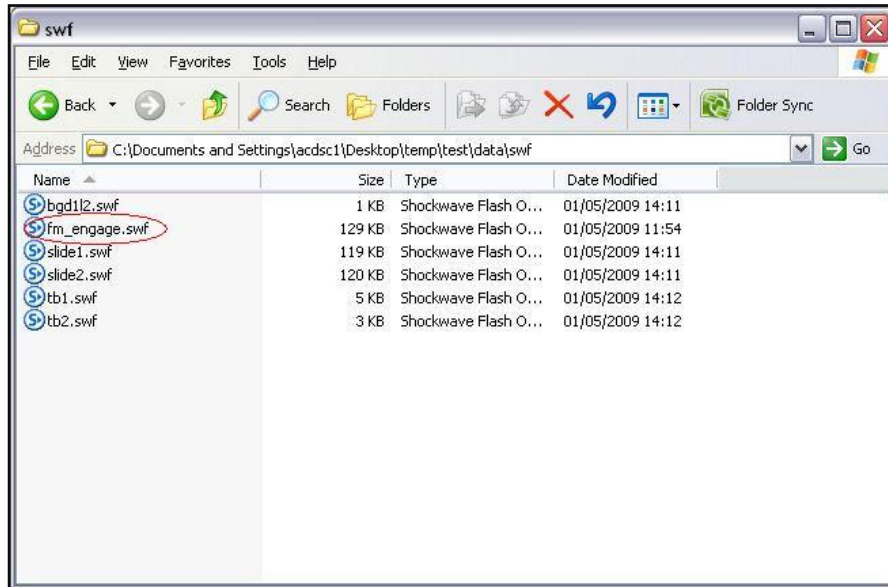
When we click on the Articulate menu on the PP toolbar (or Articulate ribbon in PP '07) and click “insert flash movie” we need to navigate to where our engage interaction was published to, and insert the “engage.swf” file.

N.B. if you'll be doing this with numerous interactions into one presentation, it's best to rename both the engage.swf file and the engage_content folder to something meaningful, otherwise it's easy to lose track of which is which.



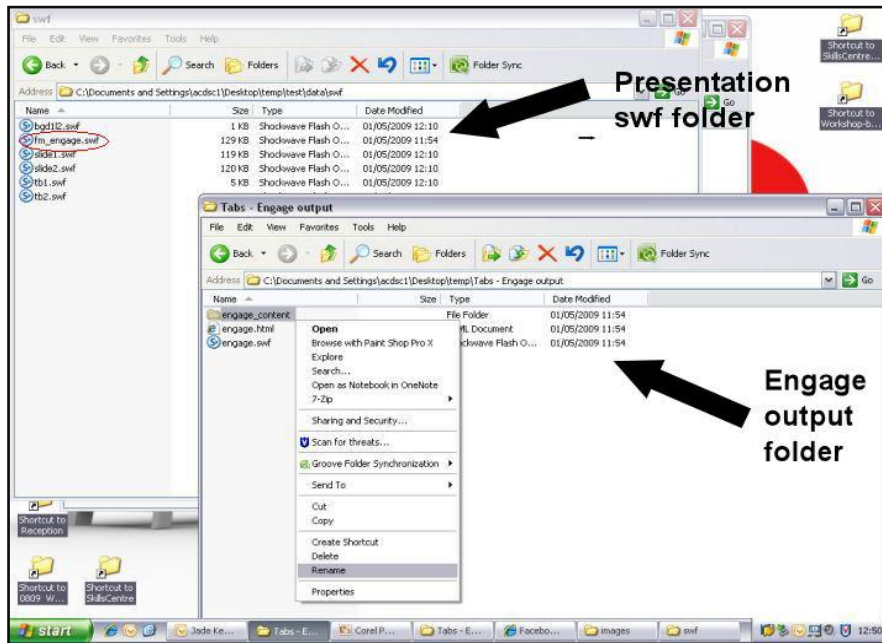


Once the engage.swf file has been inserted, we publish our presentation. This shows us the content of the output folder for the published presentation



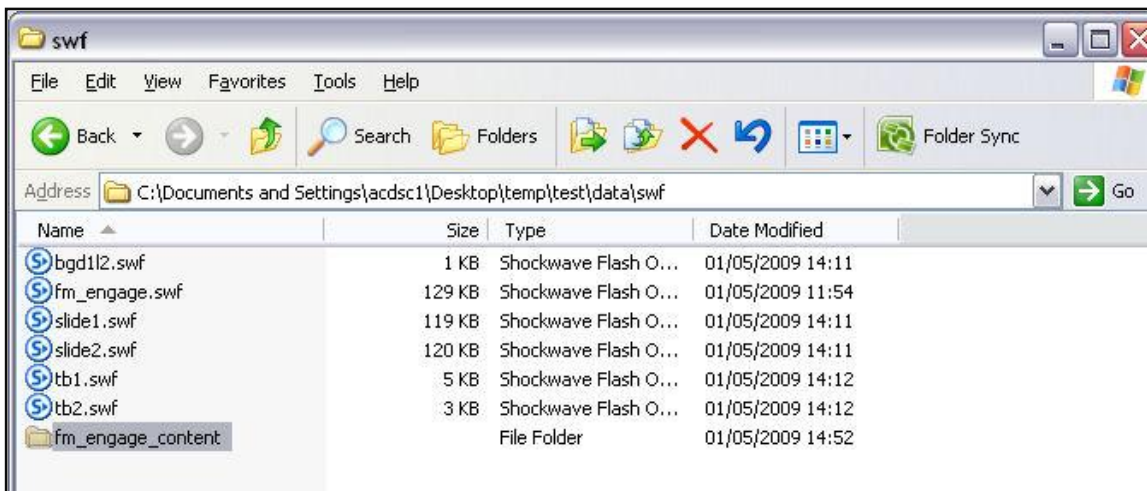
If we go into the “data” folder, then into the “swf” folder, we can see that the engage.swf file has been renamed.





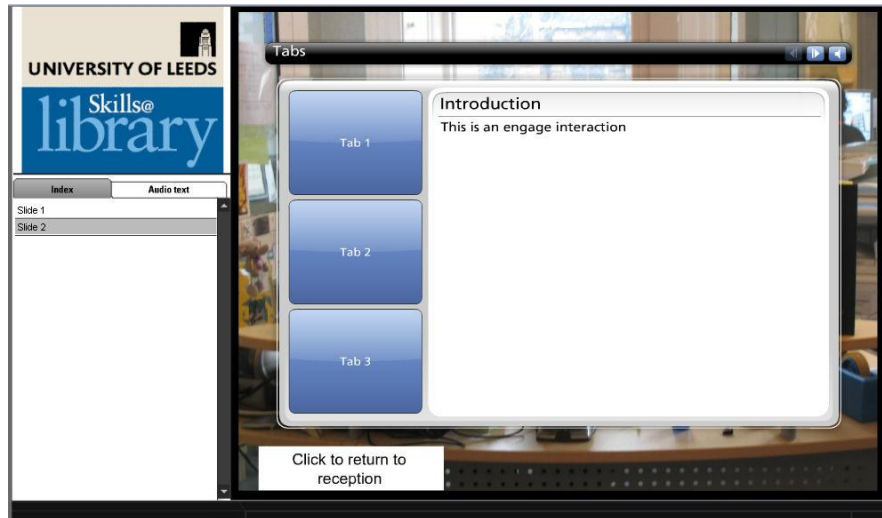
Now we need to rename the engage_content folder to reflect the name of the swift file in the presentation. So in this example we'd name it fm_engage_content

Then copy the newly renamed folder from the engage output folder into the presentation swf folder...



Which now looks like this.





So now when we open up our player.html file, the engage interaction is embedded within the slide, allowing us to see the slide background, and hyperlinked text boxes behind the swiff.

